

TR-0706 AUTO SINGLE HEAD COAXIAL WIRE TINNING TERMINAL GRIPPING MACHINE

1200 pcs/hour

(Cut wire length 35mm-800mm, wire diameter 0.64-1.78mm coaxial wire)

Intellectualize

No indentation

High precision

Automatic riveting, automatic testing, automatic fluxing and automatic tinning.



This model combines precision coaxial wire stripping machine, robotics, high-resolution vision technology, automatic riveting, automatic testing, automatic dip flux and automatic tinning, further optimization and upgrading on the basis of the original model, the overall linear design, simple and practical structure, more space-saving, high throughput rate!

Craftsmanship

Build high quality machines



STRENGTH
MANUFACTURERS



AFTER-SALES
SERVICE



SUPPORT
CUSTOMIZATION



TECHNICAL
GUIDANCE



DURABLE



REAL MATERIAL



Applicable wires



DC/AC wire



hifi wire



Automotive
Composite Wire



audio cable



RF cable



hsvdvs
connecting cable



Sample effect

Precision craftsmanship · Excellent quality

Suitable for DC/AC cables, hifi cables, automotive wires, hsdvds
connecting wires and other wiring harness processing industry





Product Parameter

Equipment name	TR-A0706 Auto Single Head Coaxial Wire Tinning terminal crimping machine
Applicable wires	Electronic wire, silicone wire, DC/AC wire, multi-core wire, multi-core over-powdered wire, isolation wire, etc.
Machine size	2300*1400*2200mm
Wire cutting capacity	35mm-800mm (35mm tinned end stripping size not more than 5mm)
Strip Size	0.1-30mm
Depth of cut unit	0.01 mm
power supply	AC220V±10V
Wire range	Coaxial wire diameter 0.64-1.78mm
Working Air Pressure	Not less than 0.5Mpa
power (output)	3 kw
weights	Approx. 1200kg
Machining precision	Tolerance of stripping at both ends ±0.1mm Tolerance of total length ±0.5mm
vision software	Japan EPSON original software
Equipment Crop Rate	≥95%
robotics	Adoption of Japanese EPSON 4-axis robot
Production capacities	900-1200PCS/H(Depends on the length of stripped wire)



Product Details

Good quality, look at the details



Chinese-English touch screen

Color touch screen operator interface, the machine comes standard with Chinese and English, the parameters are intuitive and easy to understand, more convenient, can be imported through the USB interface to export the parameter settings and a variety of data



thermostat

2 Omron thermostats, 1 tin oven thermostats





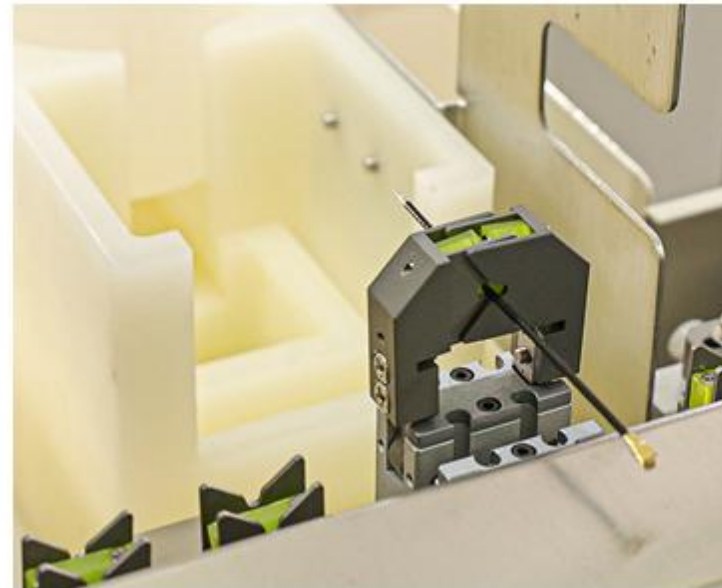
Belt feed pulley

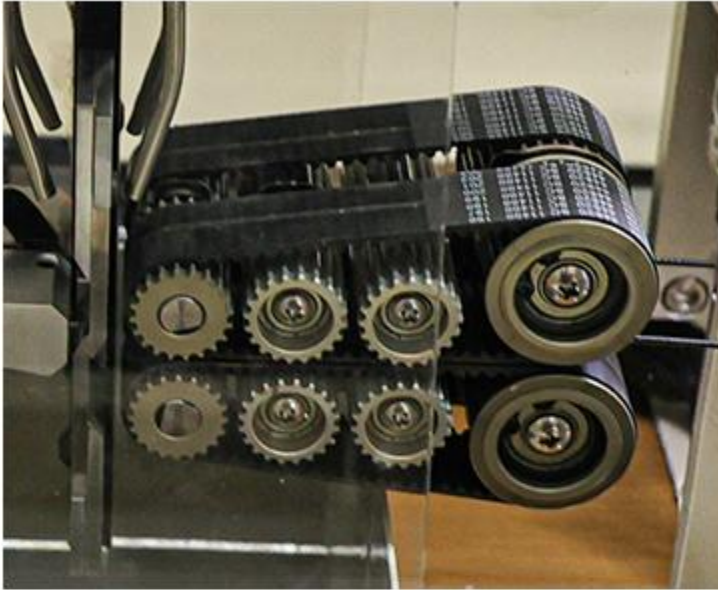
Synchronized wheel drive at the same time, pressure line strength can be adjusted to send high precision wire without any indentation, do not hurt the wire, pressure Uniform force, straight wire



Flux Dipping Device

Robotic clamping of wires for automatic wire feeding, flux dipping





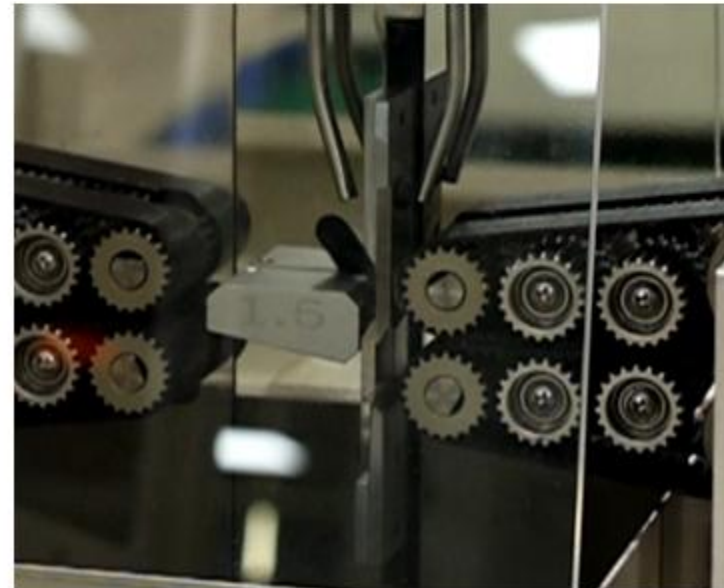
Belt feed pulley

Synchronized wheel drive at the same time, adjustable pressure wire strength to send high precision wire without any indentation, do not hurt the wire, pressure uniformity wire more straight



Cutting device

Precision high-speed steel blade, durable longer life, sharp knife, wire cutting and stripping precision in place clean, can be stripped three layers, up to nine layers of stripping





Baking unit into

After dipping the flux and the robot automatically feed the line to the baking device for two baking, baking dry to prevent fried tin



Tin Furnace Unit

The robot clamps the wire and dips it twice at 90 degrees. Precise operation, more comprehensive tinning





Transfer Wheel Unit

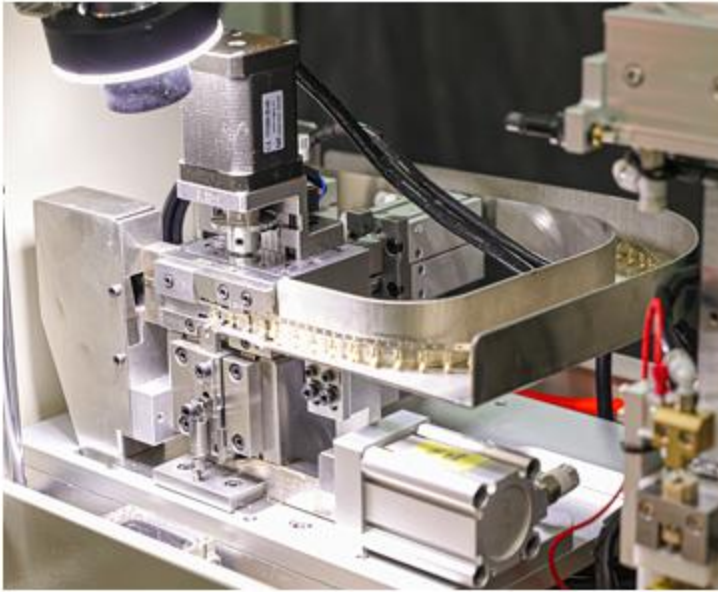
The wire rolls through the conveyor wheel to the other end for the Tinning process



Epson Mechanisms

Adopt Epson robot imported from Japan, clip the wire for riveting terminals, after visual inspection will be unqualified riveting terminals into the recycling tank, high precision, accurate and smooth action.





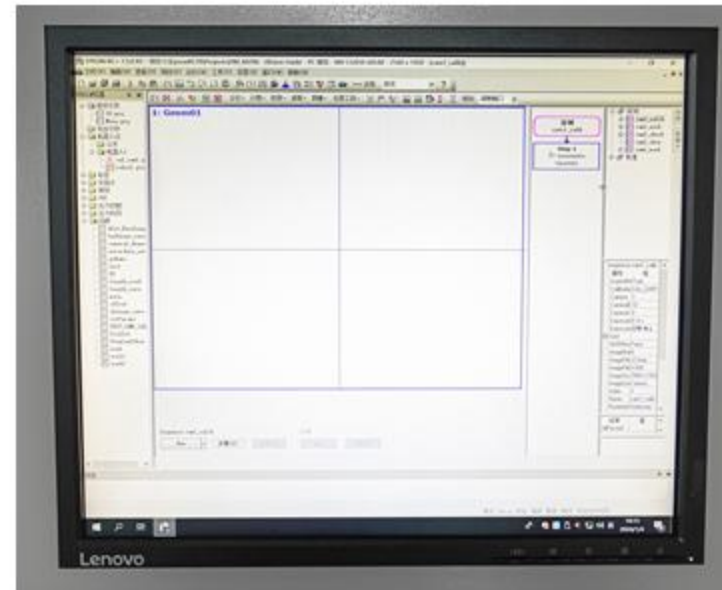
Terminal Mold

Different molds can be changed according to different terminals



Visual inspection devices

Adopting the original software of Epson imported from Japan, displaying the detection range, automatically detecting whether the product is qualified, and preventing secondary losses





Performance testing devices

Detection value can be set to automatically detect the performance of finished terminals, defective products are automatically put into the recycling tank, more than three defective products automatic shutdown



exhaust

Mechanical arm can be pulled back and forth, through the detection device to distinguish between good and unqualified, were sent to different receiving chutes.





core control area

Six stepper motor drives, three motion controllers, a visual inspection device box, an Epson robot box, accurate and smooth movements, to ensure that the machine runs accurately.



Product Size





Product Structure Diagram





Product Display



