



Lily Miao 0086-13715588365

48 cavity automatic dental floss injection molding machine

Flossing machine professional machinery

Industry Trust | Quality Assurance | Source Factory



Professional quality and exquisite craftsmanship



Quality selection of materials



Durable



Professional Quality



Full upgrade



Brand Strength

Six core advantages



Manufacturer Supply



Time Guarantee



Experience Guarantee



Material Guarantee



Price Guarantee



After-Sales Guarantee

Lily Miao 0086-13715588365

Sample package display

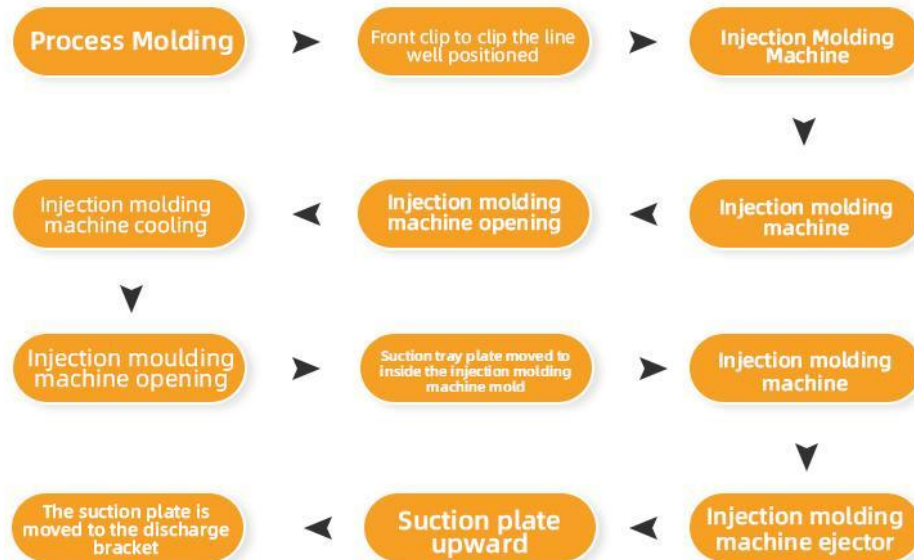
Professional quality and exquisite craftsmanship



Floss molds can be customized

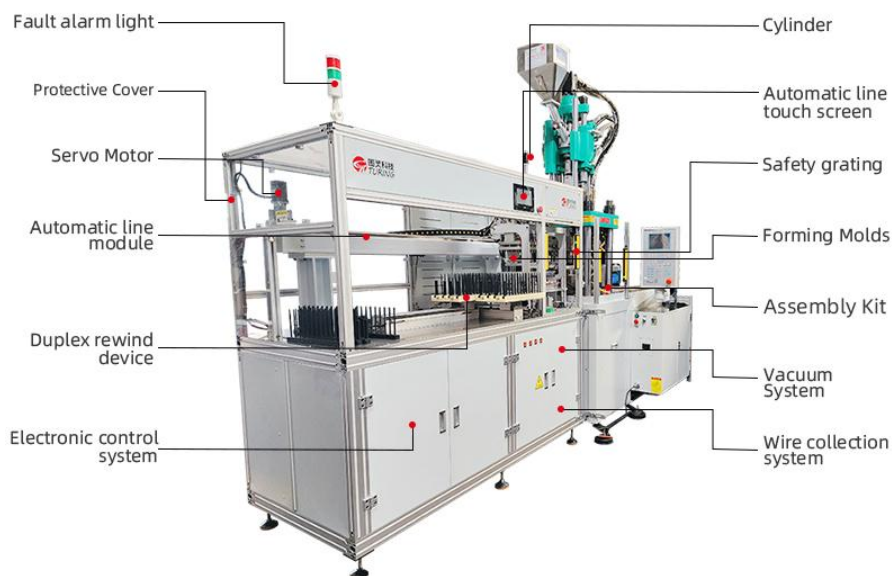
Machine operation flow

Efficient and stable labor saving



Machine Structure Diagram

Preferred process refined in technology



Product Information

DEVICE INFORMATION

[Equipment Name]

48 cavities (only) automatic dental floss injection molding machine

[Total Power]

18.5 KW

[External Dimensions]

1200*4280*2850 mm

[Applicable Wires]

Polymers, nylon, PTFE

[Power Supply and Power Consumption]

AC220V 50Hz about 1.8KW/H

[Productivity]

1 minute, 5 models,
1 model, 48 models

[Language System]

Chinese, English, Korean, and more than ten other languages

[Gas source]

0.5~0.8Mpa

[Number of cavities per die]

48 Caves

[Mold cycle]

About 11-13 seconds

Machine configuration list

| Product Specifications | Brand | Manufacturer | Brand Land | Optional area | Remarks |
|--|-----------|-------------------|------------|--------------------------|---------|
| Oil Pumps | YUKEN | YUKEN | Japan | | |
| Computer controller (vertical injection plastic machine) | Hongxun | TECHMATION | Taiwan | <input type="checkbox"/> | |
| | Projetis | BAOJIEXIN | Taiwan | <input type="checkbox"/> | |
| | Shishu | DIHZHOU | Taiwan | <input type="checkbox"/> | |
| Solenoid Valve | 7OCEAN | SEVEN OCEAN | Japan | <input type="checkbox"/> | |
| | YUKEN | YUKEN | Japan | <input type="checkbox"/> | |
| Proportional Valves | Northman | Northman | Taiwan | | |
| Material tube group | T-T | Hua Ye | Taiwan | | |
| Cylinder set | TAL-L | PIONEER | Taiwan | | |
| Oil pipe set | ATLG | ATLG | Japan | | |
| Heat Generators | TSIY | Taiyu | Taiwan | | |
| Motor Starters | SCHNEIDER | Schneider | France | | |
| Off mode start button | FOR | FUJIFILM | Japan | | |
| Temperature sensor | FOR | FUJIFILM | Japan | | |
| Oil Seal | NOK | NOK | Japan | | |
| Motor | YONGYUAN | Yongyuan | Taiwan | | |
| Location ruler | GEFRAN | GEFRAN | Italy | | |
| Hydraulic valve | YOUU | YUATSUSEILI | Taiwan | | |
| Hydraulic Motor | Wyatt | Zhenjiang Dali | USA | <input type="checkbox"/> | |
| Hydraulic Motor | Danfran | Danfoss | Denmark | <input type="checkbox"/> | |
| Pressure sensors | GEFRAN | GEFRAN | Italy | <input type="checkbox"/> | |
| Pressure sensors | WIAN | WIAN | Germany | <input type="checkbox"/> | |
| Servo Pumps | Sumitomo | SUMITOMO ELECTRIC | Japan | | |
| Servo Pumps | Eckerle | ECKERLE | Germany | <input type="checkbox"/> | |
| Servo Motor | PHASE | PHASE | Italy | <input type="checkbox"/> | |
| Servo Motor | HAITIAI | Sea & Sky | China | <input type="checkbox"/> | |

Product Selling Point Analysis

Good products to tell you in detail



01

85T vertical injection molding machine

Stable and durable, long life

02

XINJIE PLC and Touch Screen and touch screen

The number of boxes can be set as desired



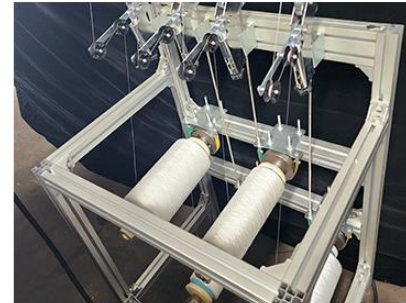
Product details show

Humanized details think what you want

03

Intelligent operation screen for dummies

One person can operate 4 machines save labor



01 Wire Release Frame

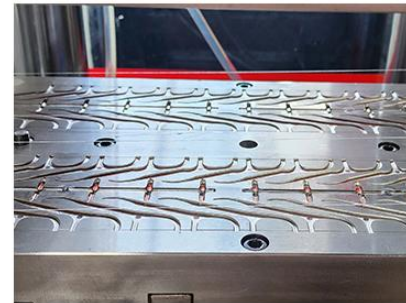


02 Injection Molding Machine

04

Automatic detection of defective rate

In the injection stage, if there are defective products will not be sucked up, thus will alarm
 Good quality rate can reach 99.99%



03 Injection Molding Tooling



04 Hot runner thermostat